

## 2013 Project TH 169 Reconstruction

Public Hearing on the Improvement Project

Speakers:  
Kathy Bailey, City Administrator  
Wes Brown, Bolton & Menk Engineering




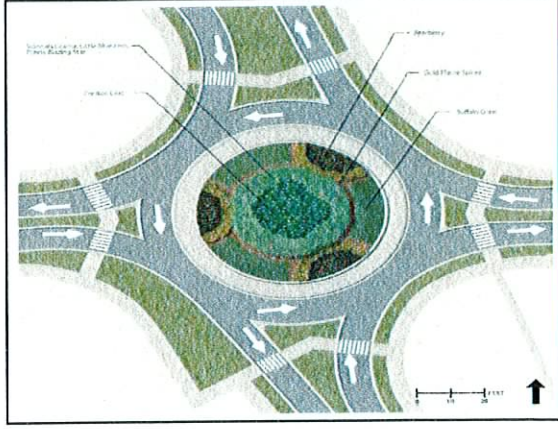
## Infrastructure Replaced

- Water Mains & Services to Prop Line
- Sanitary Sewer & Services to Prop Line
- Storm Sewer Mains & Catch Basins
- Curb & Gutter & Driveway Aprons
- Road Surface – Asphalt or Concrete
- Concrete Sidewalks
- Decorative Lighting
- Landscaping & Signage



## Streets Involved

- **Grove Street (TH 169)** from north of the railroad overpass on the south end to 1,400 feet south of I-90 at the entrances of the crossing at AmericInn and the Shell Service station.

## Preliminary Hearing

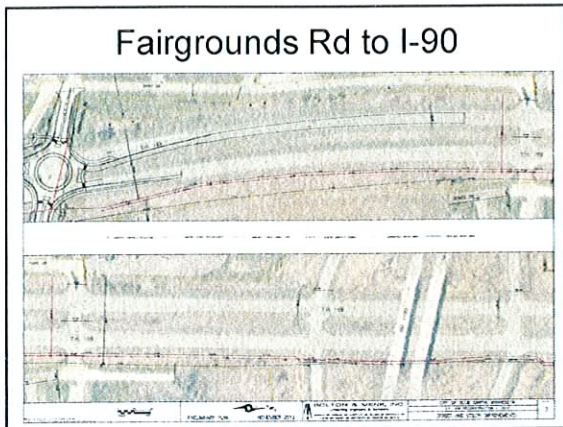
- Give Opportunity for Property Owners to See Plans and Give Comment
- Awareness
- Time to Adjust Plans
- Timeframe
- Assessments






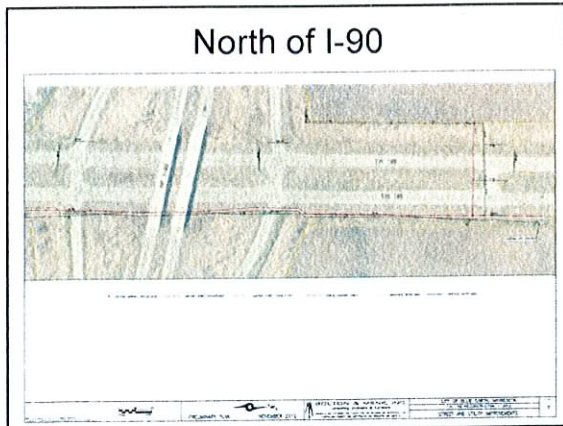

### Estimated Total Costs

- Total Project Cost Estimate - \$9.0 Million
  - Roadway - \$4.3 Million
  - Storm Sewer - \$1.4 Million
  - Sewer & Water - \$1.3 Million
  - Sidewalk - \$540,000
  - Lighting - \$900,000
  - Signage/Markings - \$250,000
  - Landscaping & Turf - \$150,000


### Assessments

- Preliminary Amounts
- Actual Assessment
  - End of Project
  - Mailed Notice
  - Hearing Date
  - Property Owner must give written notice before hearing of intent to appeal
  - Following year after construction and over life of financing

### Assessment Policy

- **Water & Sewer Mains** – paid for by rates
- **Laterals to property** – assessed
- **Street surface** – 30% of 36 ft. residential/7 ton design (70% and over design is government cost)
- **Sidewalk** – for this project is part of the pathway or trail system and is not assessed.
- **Storm Sewer** – also paid for by rates



### Estimated Local (City) Costs

- Water main construction - \$582,463
  - City – \$523,338
  - Property Owners – \$61,490
  - (Estimate per service - \$2,365)
- Sanitary Sewer construction - \$805,778
  - City - \$771,608
  - Property Owners - \$34,170
  - (Estimate per service - \$2,010)



### Deferment

- Senior Citizens over 65 or Active Military Duty Persons
  - Must have income less than 60% of median income
  - Deferment reviewed each year
  - Deferment due upon death, sale, loss of homestead status, no hardship or failure to renew yearly.



### Local Costs (cont.)

- Street Construction - \$4.3 Million
  - Property Owners - \$526,457
  - (Based on 30% of past residential street projects - \$79.50/ft)
  - Same rate on other 2013 projects
- Decorative Lighting Share - \$580,000
  - Electric Utility Revenues

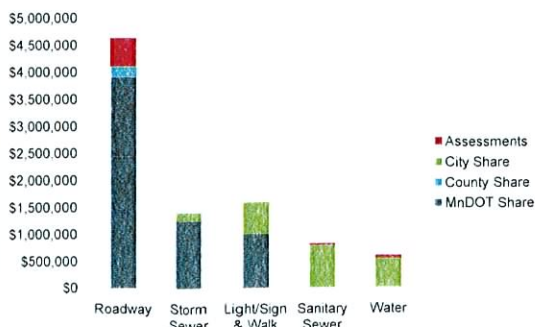


### Funding

- Bonding
- Public Facility Authority
- Utility Funds
- State and Federal Highway Funds
- County Road funding
- Assessments



### Overall Cost Allocation



### Additional Information

- MnDOT Contacts
  - Brett Benzkofer  
Design Engineer  
507-304-6147  
[brett.benzkofer@state.mn.us](mailto:brett.benzkofer@state.mn.us)
  - Rebecca Arndt  
Public Affairs and Media  
507-304-6106  
[rebecca.arndt@state.mn.us](mailto:rebecca.arndt@state.mn.us)



[www.dot.state.mn.us/d7/projects/169blueearth/index.html](http://www.dot.state.mn.us/d7/projects/169blueearth/index.html)