



City of
Blue Earth

**CITY OF BLUE EARTH
AGENDA
CITY COUNCIL WORKSESSION
MONDAY MARCH 5, 2018 @ 4:30 P.M.**

Call to order.

Roll call.

Old Business.

1. Public Works Maintenance Facility Project

New Business.

Adjourn.

By Order of the Blue Earth City Council

Timothy Ibisch

City Administrator

Post @ City Hall-Friday, , 2018 through Monday, , 2018

Distribute to Mayor & Council members-Media & file



City of
Blue Earth

the earth so rich the city grows

MEMORANDUM

TO: City of Blue Earth City Council
FROM: Timothy P. Ibisch, City Administrator
SUBJECT: Public Works Maintenance Facility Upgrade
DATE: 03/3/2018

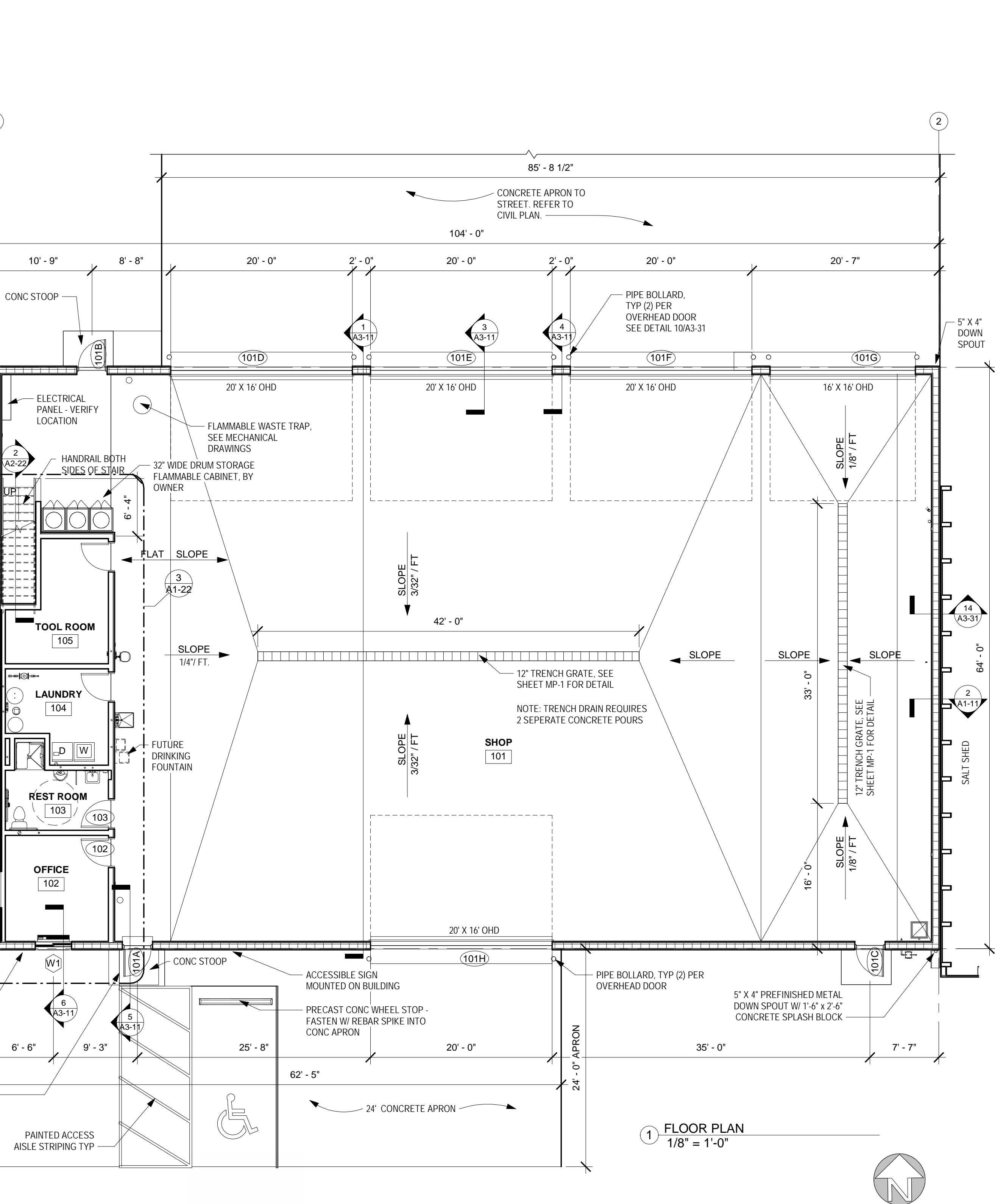
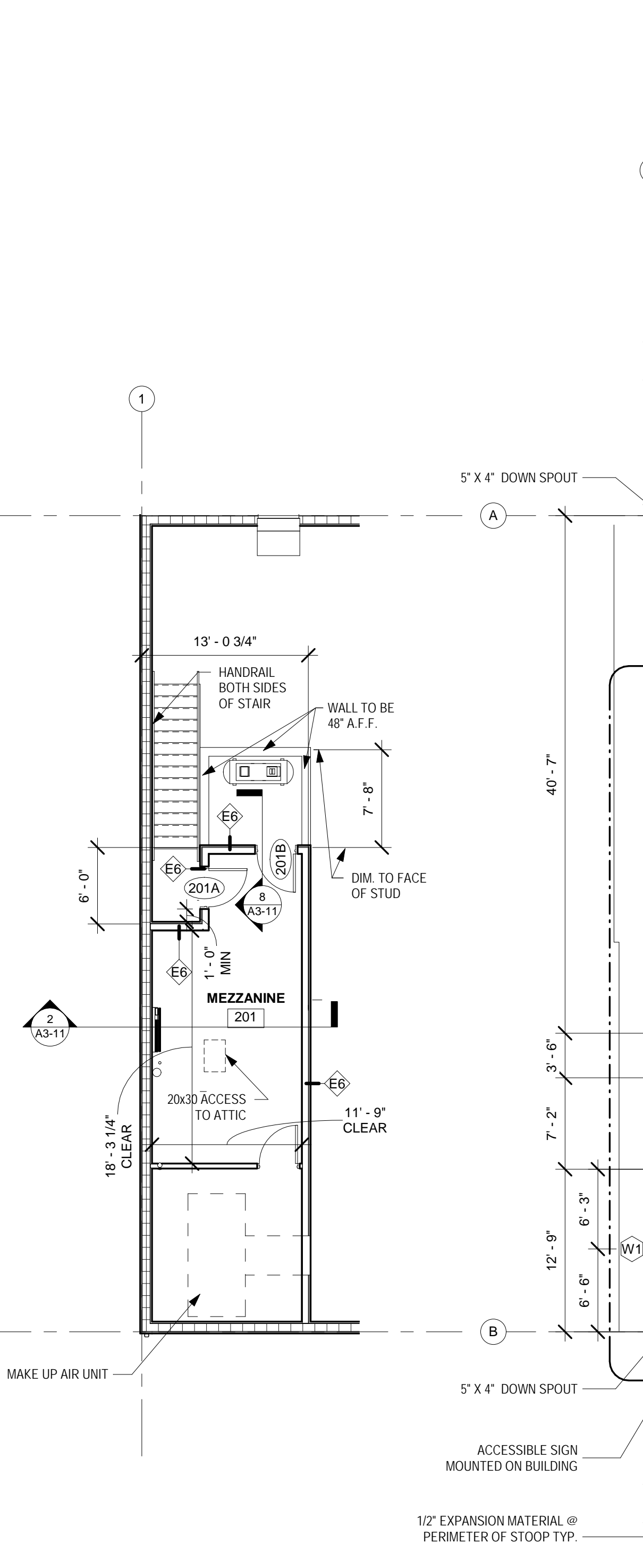
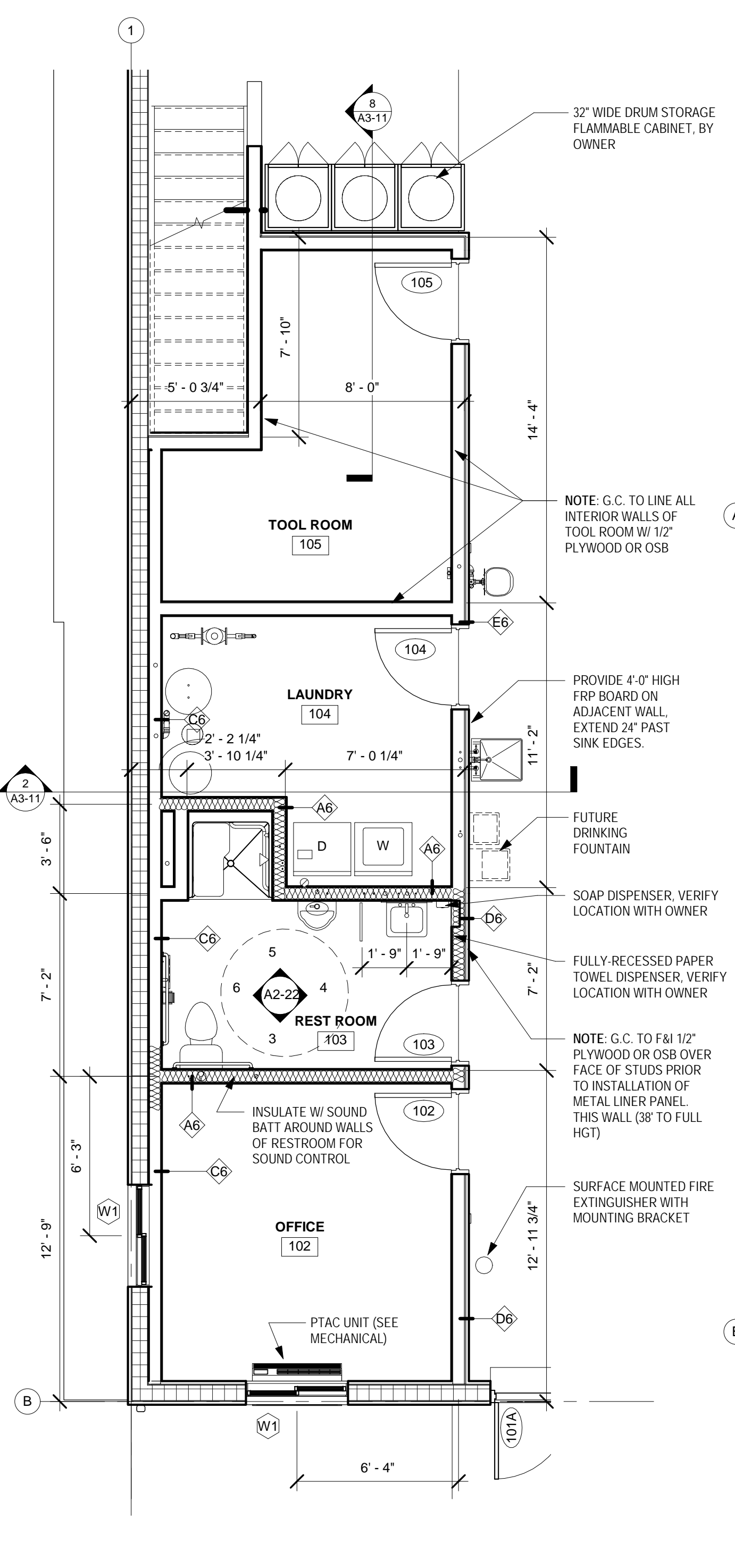
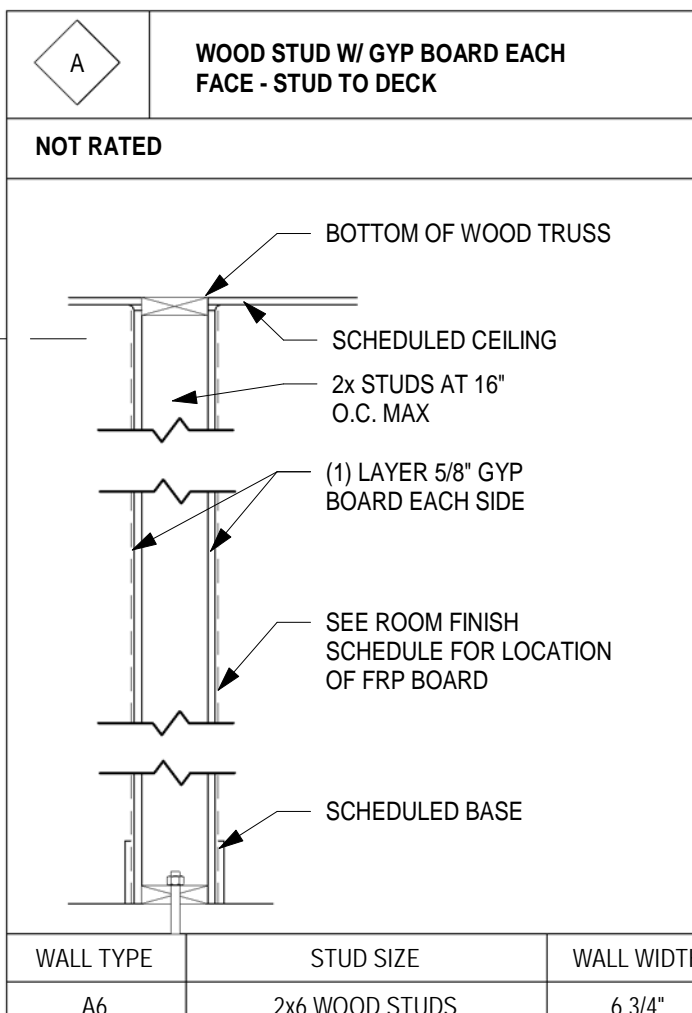
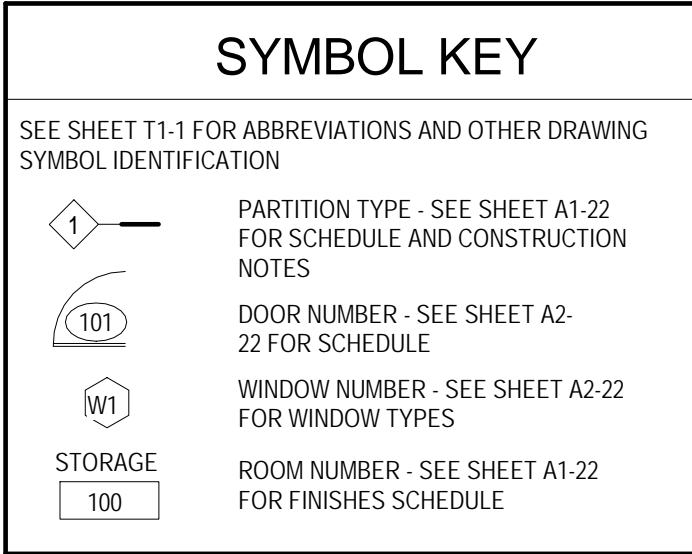
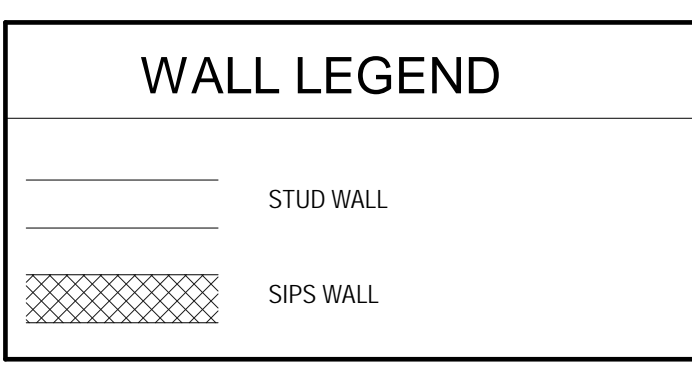
As part of the long range planning beginning in 2010, an upgrade to the current PWD facility was identified. After a rather daunting OSHA inspection the City Council felt it prudent to move towards a new facility. However, this project has been plagued by fits and starts and as a result has been delayed repeatedly. In 2017 the Council once again requested additional information and the Public Works Director and I coordinated to hire an architectural firm to help us understand what we needed.

Brunton Architects is based out of Mankato and we felt that their local knowledge might prove beneficial to our project. We also made it clear what our budget was and they understood that.

However, during the course of the project its scopes broaden due a change in the nature of the building being proposed. Rather than a simple garage facility it will have greater capability, i.e. welding and wash bay capacity. This requires additional costs. Therefore, I was pleased when the bids came in. The low bid of \$810,000 from Ankeny was in line with my hope.

With tonight's discussion we need to make a decision regarding the status of this project. The costs seem realistic based on the scatterplot or results and I believe that 2018 will be the last year that we can expect reasonably 3% interest rates on our GO debt issuances. If the Council decides not to pursue the project at this time, I am seeking further direction as to how they would like me to proceed.

- FLOOR PLAN NOTES:**
- DO NOT SCALE DRAWINGS. DRAWINGS ARE DIAGRAMMATIC ONLY. REPORT DISCREPANCIES TO BRUNTON ARCHITECTS AND ENGINEERS.
 - SEE CIVIL DRAWINGS FOR BUILDING, SITE, SIDEWALK AND CURB LAYOUT.
 - LOCATE R.O. FACE OF DOOR JAMB 4" MIN FROM THE FACE OF ADJACENT WALL FINISHES UNLESS OTHERWISE DIMENSIONED OR DETAILED.
 - EACH TRADE IS RESPONSIBLE FOR FIRE SAFING AROUND THEIR PENETRATIONS THROUGH RATED AND UNRATED FLOORS AND WALLS. WHERE CHANGE IN FLOOR FINISH OCCURS IN DOORWAYS, THE CHANGE SHALL BE CENTERED UNDER THE CLOSED POSITION OF THE DOOR. PROVIDE BOND BREAKER AT ALL DISSIMILAR MATERIALS.
 - ASSUMED FLOOR ELEVATION = 100'-0" UNLESS NOTED OTHERWISE.
 - PROVIDE BACKER ROD AND CAULK AT ALL DISSIMILAR MATERIALS.
 - RESTROOM FLOORS ARE NOT REQUIRED TO SLOPE TO FLOOR DRAIN, UNLESS NOTED.



ROOM FINISH SCHEDULE

WT	ROOM NAME	FLOOR FINISH	WALL BASE				WALL FINISH				CEILING FINISH	NOTES
			NORTH	EAST	SOUTH	WEST	NORTH	EAST	SOUTH	WEST		
101	SHOP	SEALED CONC	METAL LINER PANEL	METAL LINER PANEL	METAL LINER PANEL	METAL LINER PANEL	METAL LINER PANEL	METAL LINER PANEL	METAL LINER PANEL	METAL LINER PANEL	METAL LINER PANEL	
102	OFFICE	SEALED CONC	VINYL	VINYL	VINYL	VINYL	GYP BD - PAINT	GYP BD - PAINT	GYP BD - PAINT	GYP BD - PAINT	GYP BD - PAINT	
103	REST ROOM	EPOXY	VINYL	VINYL	VINYL	VINYL	FRP BD	FRP BD	FRP BD	FRP BD	GYP BD - PAINT	
104	LAUNDRY	SEALED CONC	NA	NA	NA	NA	OSB BD	OSB BD	OSB BD	OSB BD	METAL LINER PANEL	
201	MEZZANINE	T&G PLYWOOD	NA	NA	NA	NA	OSB BD	OSB BD	OSB BD	OSB BD	METAL LINER PANEL	

